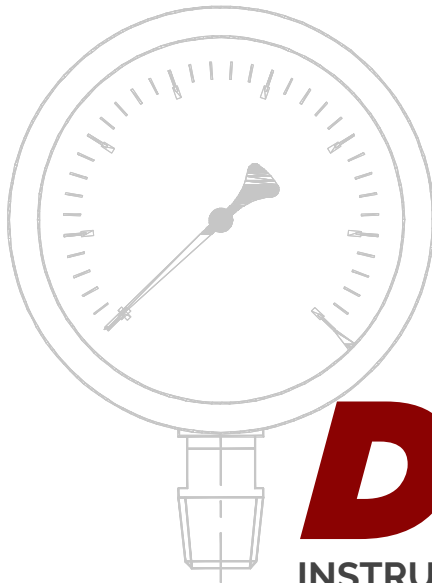


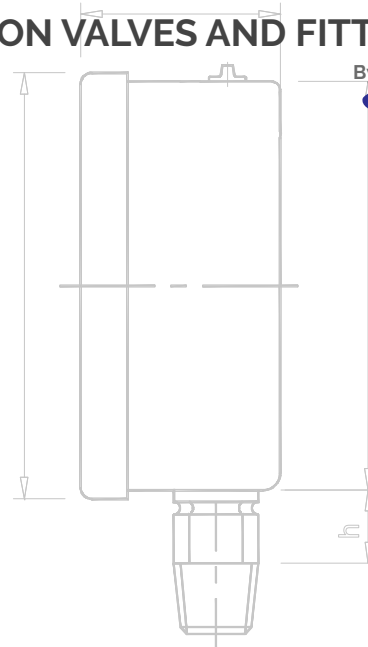


Decide with Confidence
DUNS NO. : 86-917-7745



DS-LOK

INSTRUMENTATION VALVES AND FITTINGS



By: **PMT**

- NPT/BSP, Threads
- Manufacturing Standard EN-837 / IS 3624
- Dial size : 63mm, 100mm, 150mm & 200mm

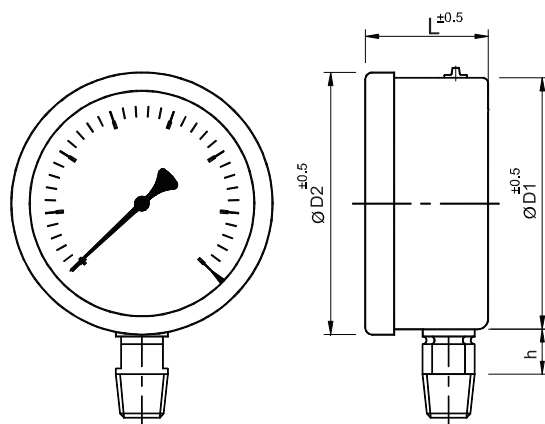
PRESSURE GAUGE

Glycerin Filled Pressure Gauges

Glycerin Filled Pressure Gauges are ideal for dampening the effect of vibration & pulsation. it also lubricate the movement & internal part which extends the life of gauge. it enhance the reliability and integrity of measuring system for long periods under extreme operating condition.

APPLICATION

Air compressor, Hydraulic Presses, Pump, Industrial Power Plants, Marine Engine, Pipelines and Transmission Stations where Vibrations & Pulsation are destructive factors.



Size	D1	D2	L	h
2.5" (63mm)	62	68	31	15
4" (100mm)	99	108	48	15
6" (150mm)	152	165	54	20
8" (200mm)	203	216	60	20

* ALL DIMENSIONS ARE IN MM

SPECIFICATION

Dial size : 63mm, 100mm, 150mm & 200mm

Case & Bezel (IP-65) : SS 304, Crimp type /Snap Action Bayonet type
& for 250mm Die cast aluminum.

Accuracy : $\pm 1\%$ of full scale

Movement : SS 304 / Brass

Pressure Element : SS 316 (=70bar 'C' type >70 bar Coil type)

Socket : SS 304 / SS 316 / Brass (63mm)

Dial : Aluminum white painted with 270 degree black scale marking

Pointer : Aluminum / brass with black finish

Window : Acrylic / Safety glass

Blow out Protection : On top at 0.6 kg/cm²

Over load Protection : 125% of f.s.d For = 150 kg/cm²
115% of fs.d for > 150kg/cm²

Mounting : Stem (bottom) , Surface, panel

Mounting, Flush panel (Bracket type)

Connection : 1/4" , 3/8" , 1/2" BSP/NPT(M)

Scale Range : Vacuum , Compound & Pressure up to 1400 kg/cm²

Joint : Argon arc welded

Manufacturing Standard : EN-837 / IS 3624

Ambient Temperature : 0° C to + 60° C

Digital Pressure Gauges

Cannot measure pressure with fine precision by mechanical gauges, switch to Digital Pressure Gauges for measure pressure more accurately & precisely. Get accuracy upto six times more compared to analog gauges and high resolution with least count upto 0.001 kg/cm² / bar. Ideal for laboratory use, pressure gauge calibration and applications requiring high accuracy, precision and repeatability.

LOW COST DIGITAL PRESSURE GAUGE

Ideal for Replacing Analog Gauges

Features

Low Cost

Accuracy < $\pm 0.5\%$ F.S.

Pressure Ranges upto 700 bar

Measurement Units: PSI, BAR, kg/cm²

Available Ready Stock

Other Specifications

Over Range Protection: 2X Rated Pressure

Burst Pressure: 5X or 20,000 PSI whichever is less

Pressure Cycles: >100 Million

Operating (Ambient): -10°C to 60°C

Storage: -20°C to 70°C

Display: 0.6 LCD display and blue Backlight

Power 9 Volt Alkaline Battery

Automatic Power Off 5 minutes

Battery Life: about 3.5 years



Pressure Ranges

-1 to 3 bar, -1 to 5 bar, -1 to 25 bar, -1 to 35 bar, -1 to 100 bar, -1 to 350 bar, -1 to 700 bar

HIGH ACCURACY DIGITAL PRESSURE GAUGE

Ideal for Calibration and High Accuracy Applications

Features

3" / 4" dial size

High Accuracy, High Resolution, High Precision

0.1%, 0.075%, 0.05% F.S. Accuracy

Selectable Units: kg/cm², bar, psi, mmhg, mmwc, kpa, mbar

Wetted parts SS316

Ranges from 0-1 bar upto 700 bar, vacuum & compound

Customized Pressure Ranges

Accessories: Pulsation Dampner, Syphons, Diaphragm Seals, Gauge Cocks, Gauge Savers

Pressure Ranges

0-1, 0-2, 0-7, 0-10, 0-20, 0-35, 0-70, 0-100, 0-200, 0-350, 0-400, 700 kg/cm² or bar

-1x0 (vacuum) & compound ranges -1x7, -1x20, -1x35 bar / kg/cm²

Note

Or any custom range as required. Also available in mmwc ranges



DS-LOK

INSTRUMENTATION VALVES AND FITTINGS



Valves

- Needle Valves
- Manifold Valves
- In Line Check Valve
- Proportional Relief Valves
- Instrument Ball Valves
- Mono Flange Valves
- Integral Block & Bleed Valves
- Bleed & Purge Valves
- Thermowells
- Pressure gauge Accessories

Fittings

- Tube Fittings
- Pipe Fittings
- High Pressure- Pipe Fittings
- Hydraulic Fittings
(DIN 2353, JIC Fittings, ORFS Fittings)

Forged Steel Valves

- Forged Steel Globe Valves (Cryogenic Available)
- Forged Steel Gate Valves (Cryogenic Available)
- Forged Steel Lift check Valves
- Forged Steel Ball Valves (Cryogenic Available)